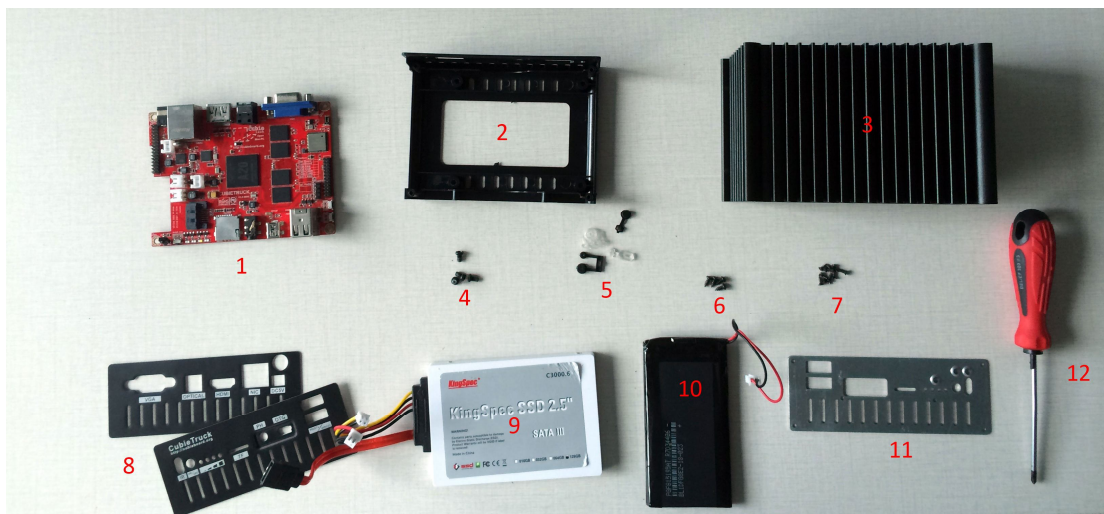


Cubietruck Metal Case Installation Guide

I. Accessories and tools

You can see the follow accessories on picture 1.

1. Cubieboard3 main board
2. Inner plastics bracket
3. Metal case
4. PM3*5 screw(for install HDD, here in after referred to as *S1*)
5. Some little accessories
6. PA2.6*6 screw(for install CT, here in after referred to as *S2*)
7. PM1.6*2 screw (for fixing the plastics inner bracket, here in after referred to as *S3*)
8. Outer metal baffle *2
9. SSD
10. Li-battery
11. Inner metal baffle
12. Screwdriver

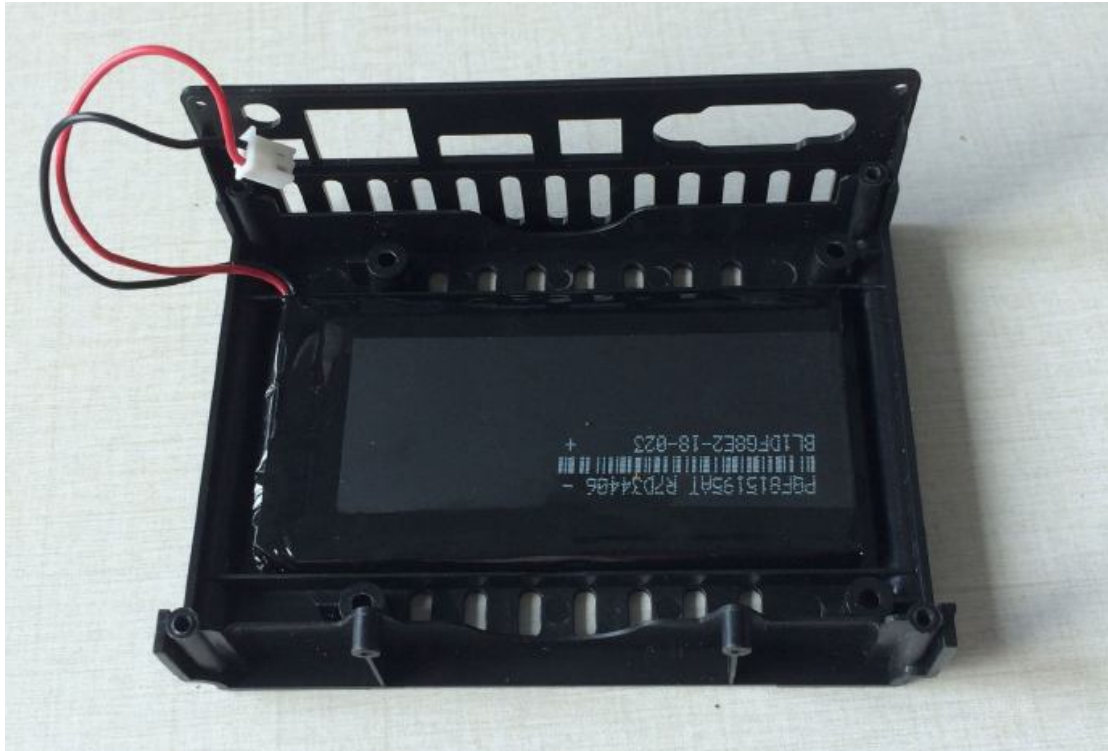


Picture 1

II. Installation process recording

Step 1 : Stick the lithium battery

We should put the cable of Li-battery left side as picture 2.



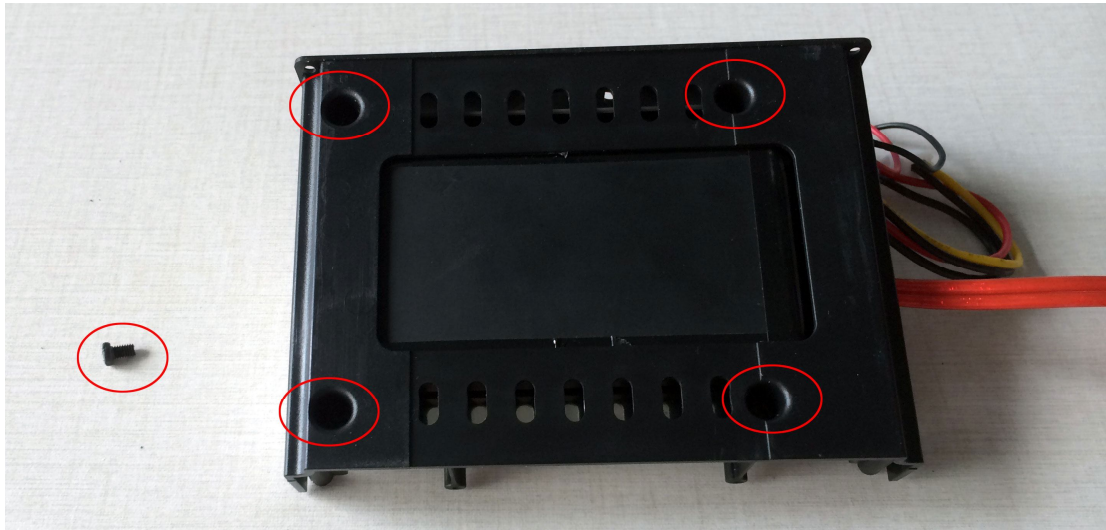
Picture 2

Step 2 : Install the hard disk drive

When puts the HDD, we should make sure the SATA cable the same with the cable of Li-battery all in left side, and then turn the case (refer to picture 3-2). The four holes on HDD bottom were directed to the four holes of inner plastics case, screw them one by one, use the screw “S1”.



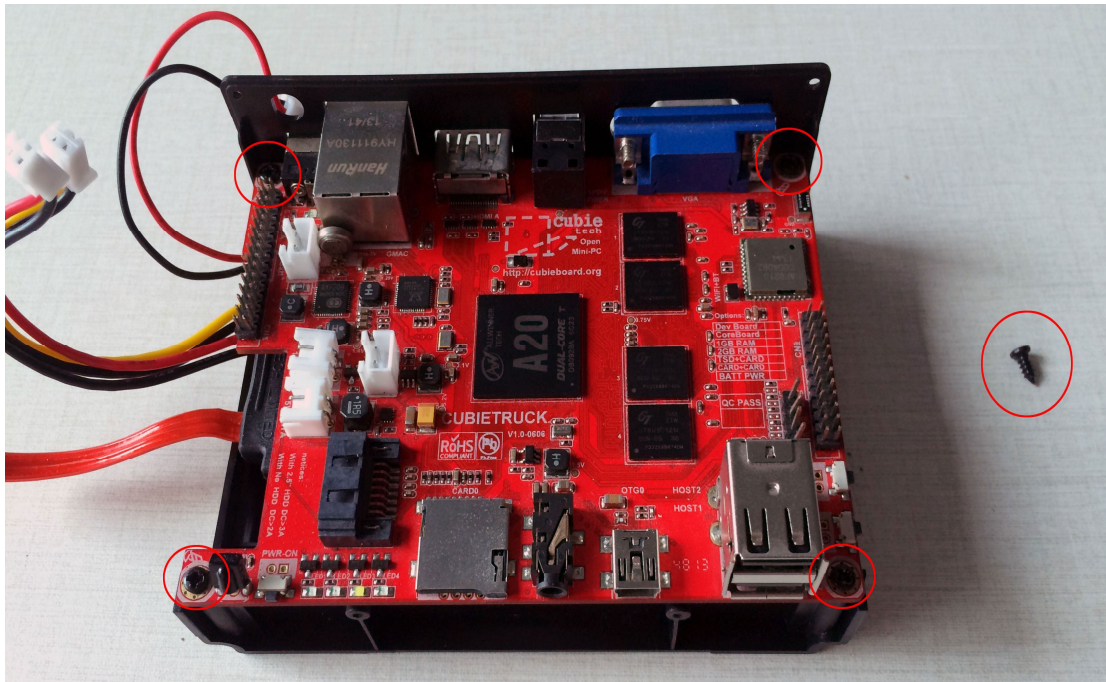
Picture 3-1



Picture 3-2

Step3 : Cubieboard3 fix

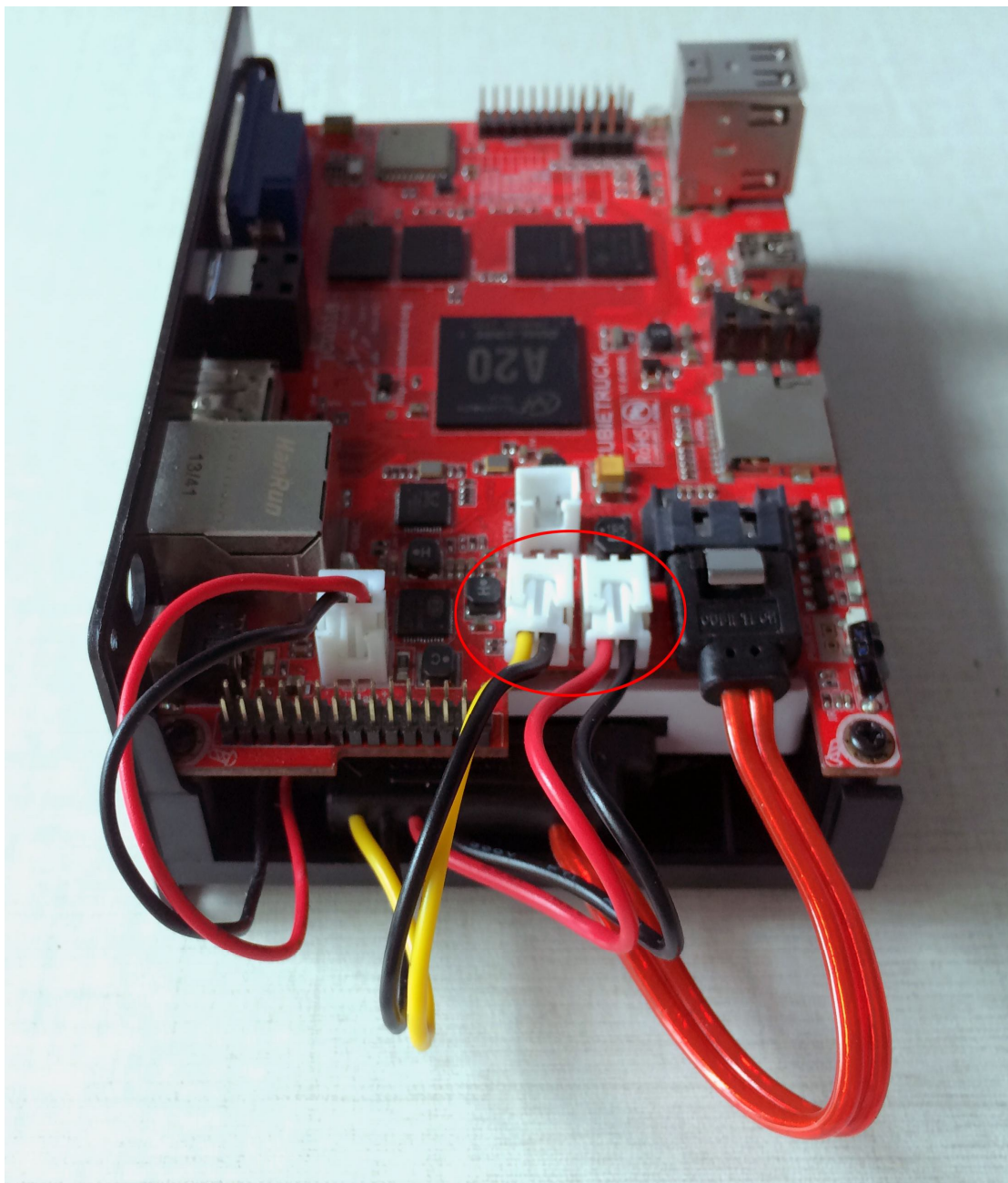
Put CT to the inner plastics bracket, screw “S2” to the four holes, screw CT with inner plastics case. Refer to Picture 4.



Picture 4

Step 4: Put up the power cable and the SATA cable

Please see the cable position shows, Put the power cable on the left side, others are SATA cable, there is one point that we should mention the two headers all use for power supply, left side one is 12V, right side one is 5V, but the 12V is useless in 2.5 inch HDD, to put two cables up just for easy installation.



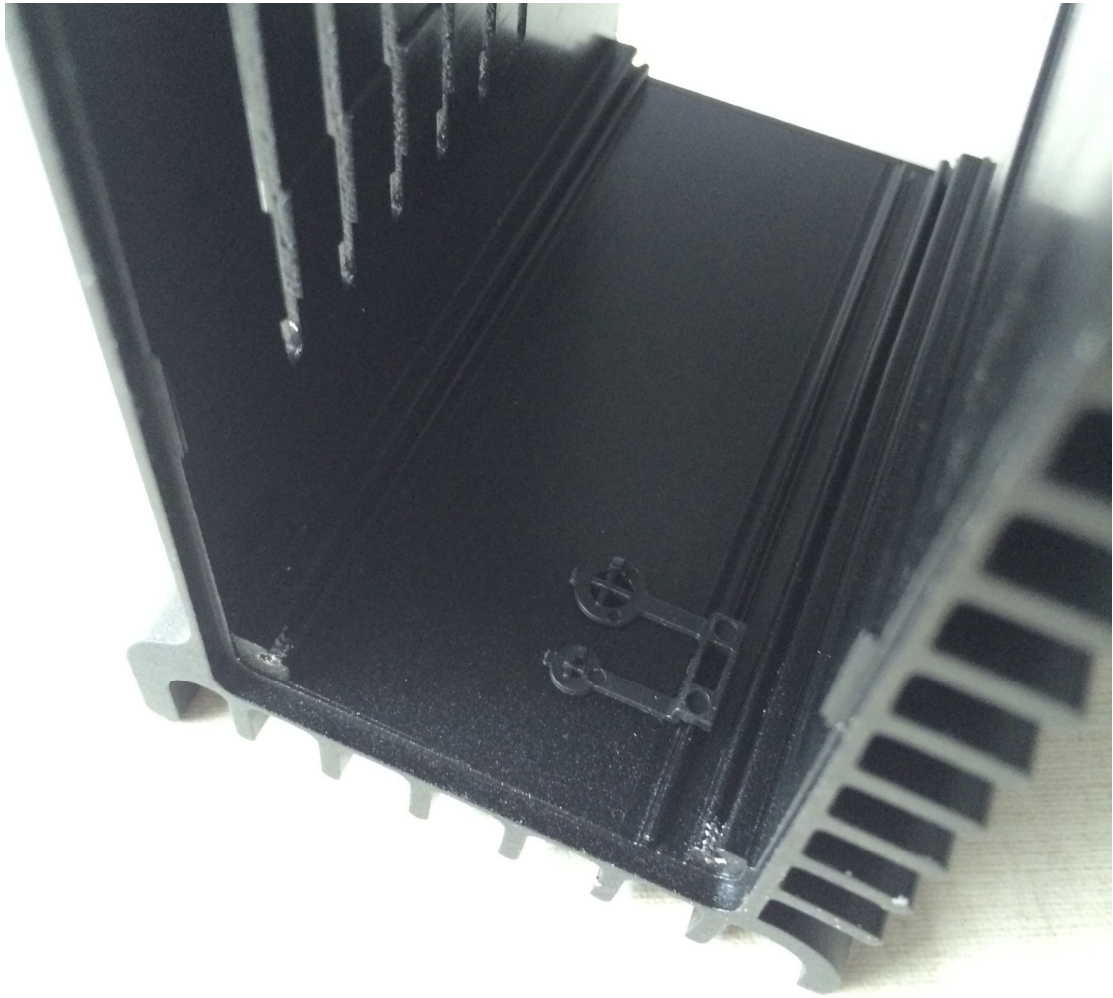
Picture 5

Step5: Put the inner plastics case into the metal case

Firstly, we should put the plastics bottom into the hole of flank of metal case , refer to picture 6-2, in order to prevent it fall off, the topside of plastics bottom was pressed on the metal inner edge. To facilitate installation, we can do the power cable and SATA cable firstly as the picture 6-3 shows. One point we should mention that is we should notice there was direction exist, Look at picture 6-4, the reset and FEL bottom should in the same side with plastics bottom. Please refer to the renderings picture 6-5.

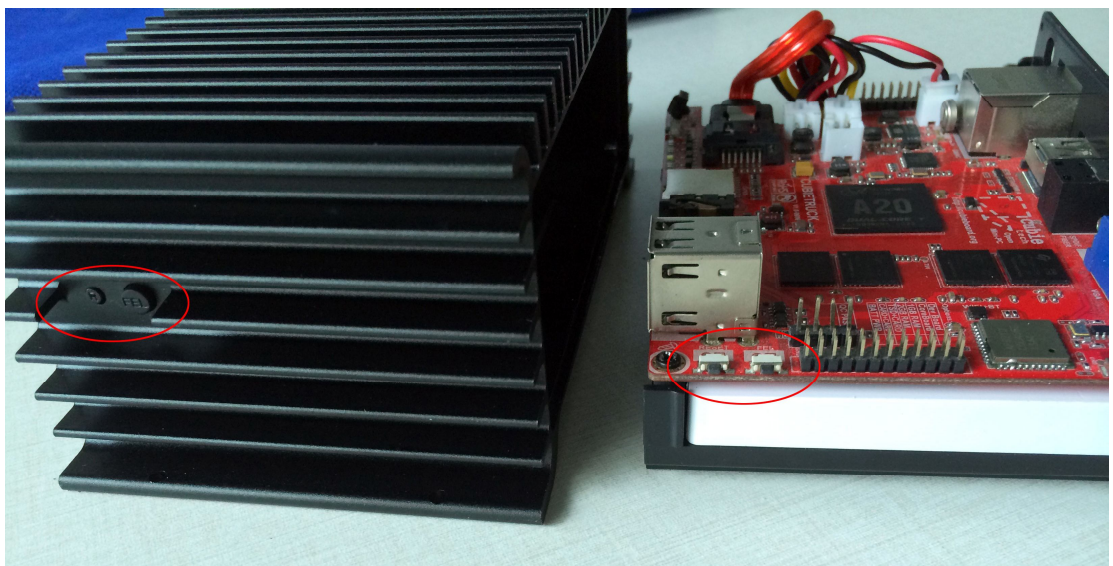


Picture 6-1

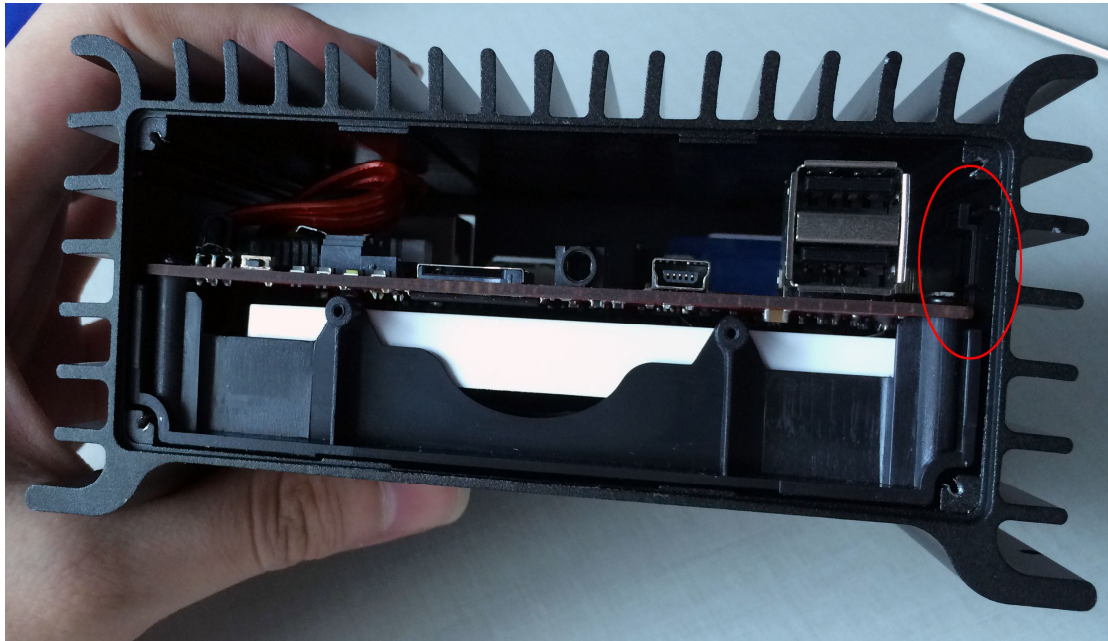


Picture 6-2

Picture 6-3



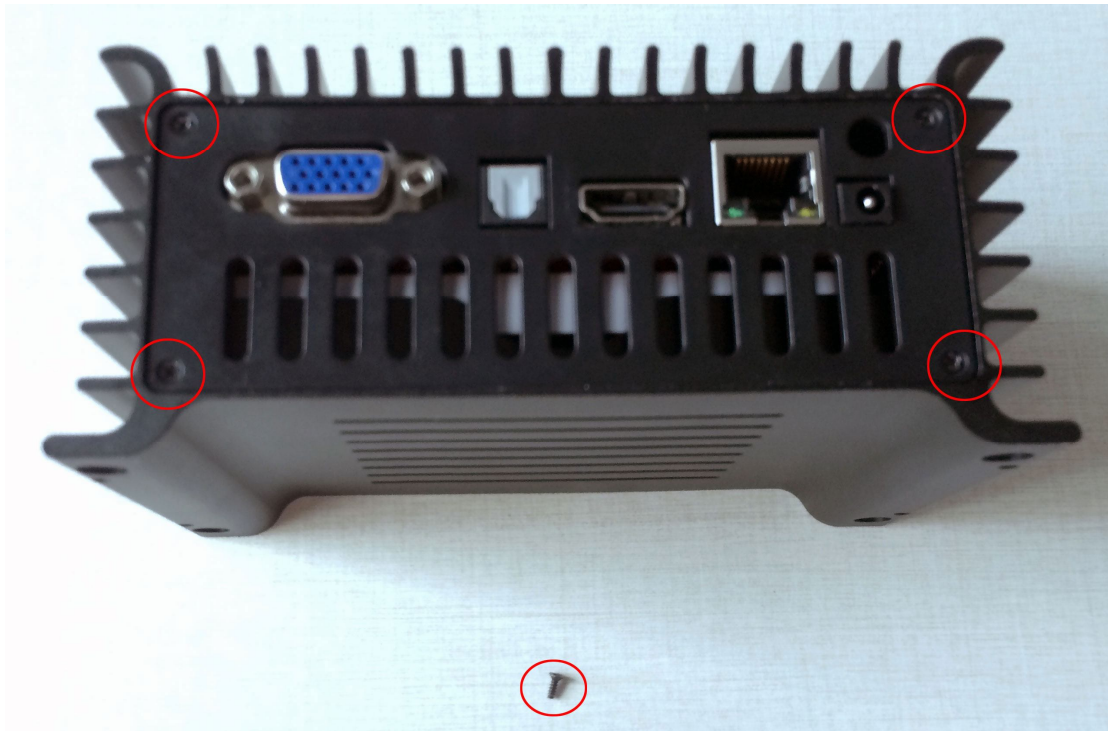
Picture 6-4



Picture 6-5

Step 6: Fix the inner plastics case into metal case

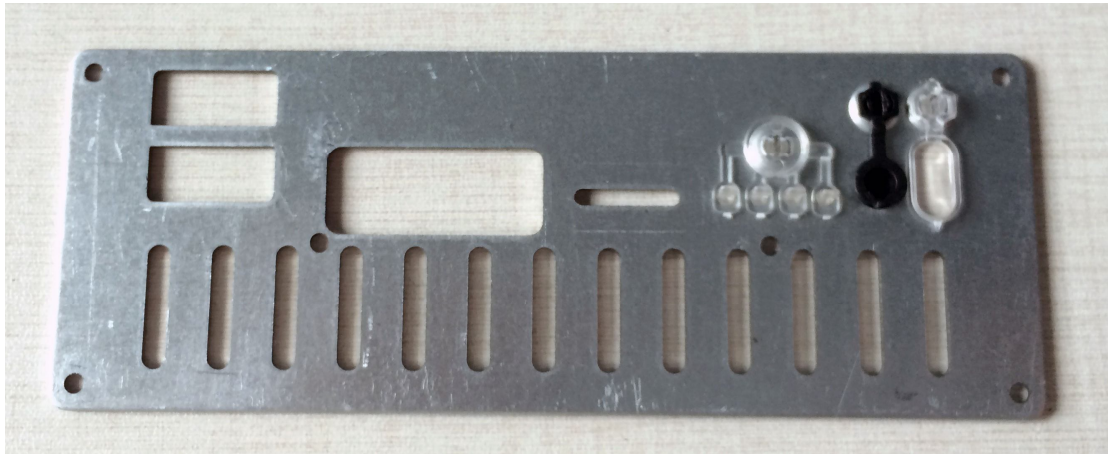
On this step, we should use ten screws “S3” (you can see the screws on the bottom of picture 7-1) to fix them up. After do the fix work as the picture 7-1 and picture7-3, we come to the next step which is install the inner metal baffle, just do as the picture7-2-1,picture 7-2-2, and picture7-2-3, and then fix this inner metal baffle with screws on the side without plastics.



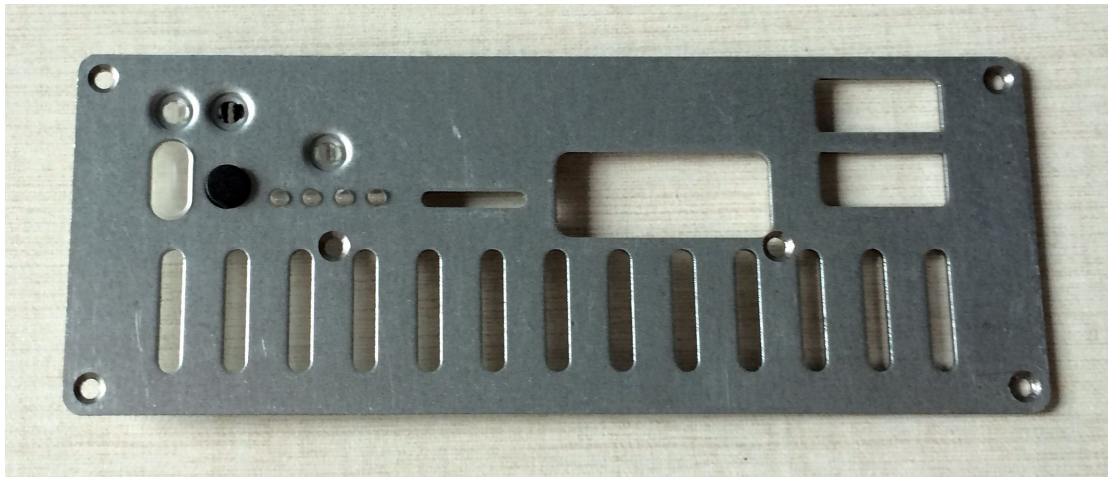
Picture 7 -1



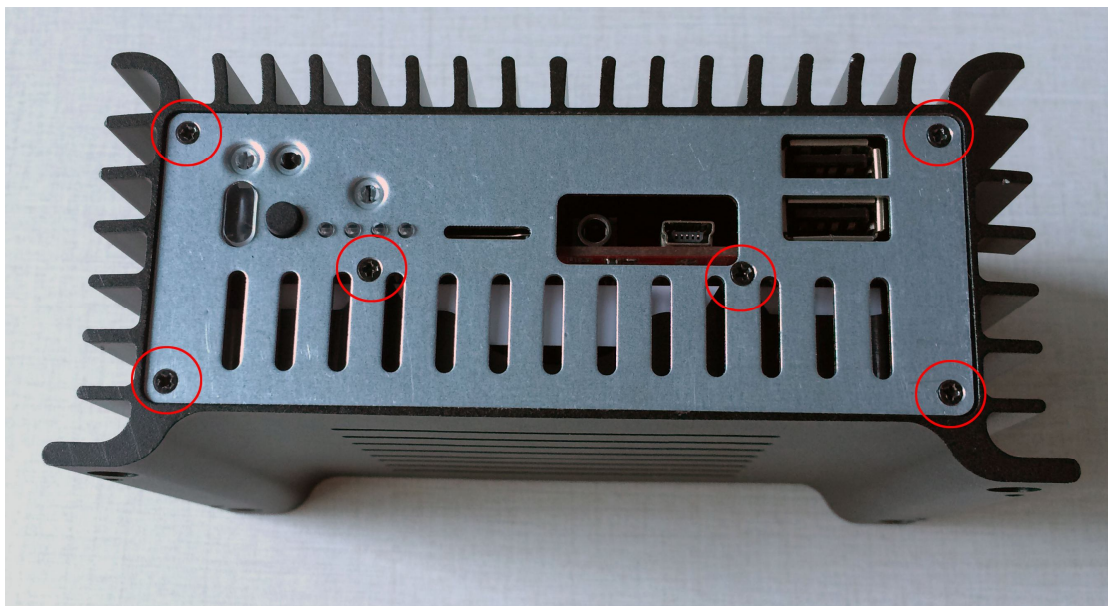
Picture 7-2-1



Picture 7-2-2



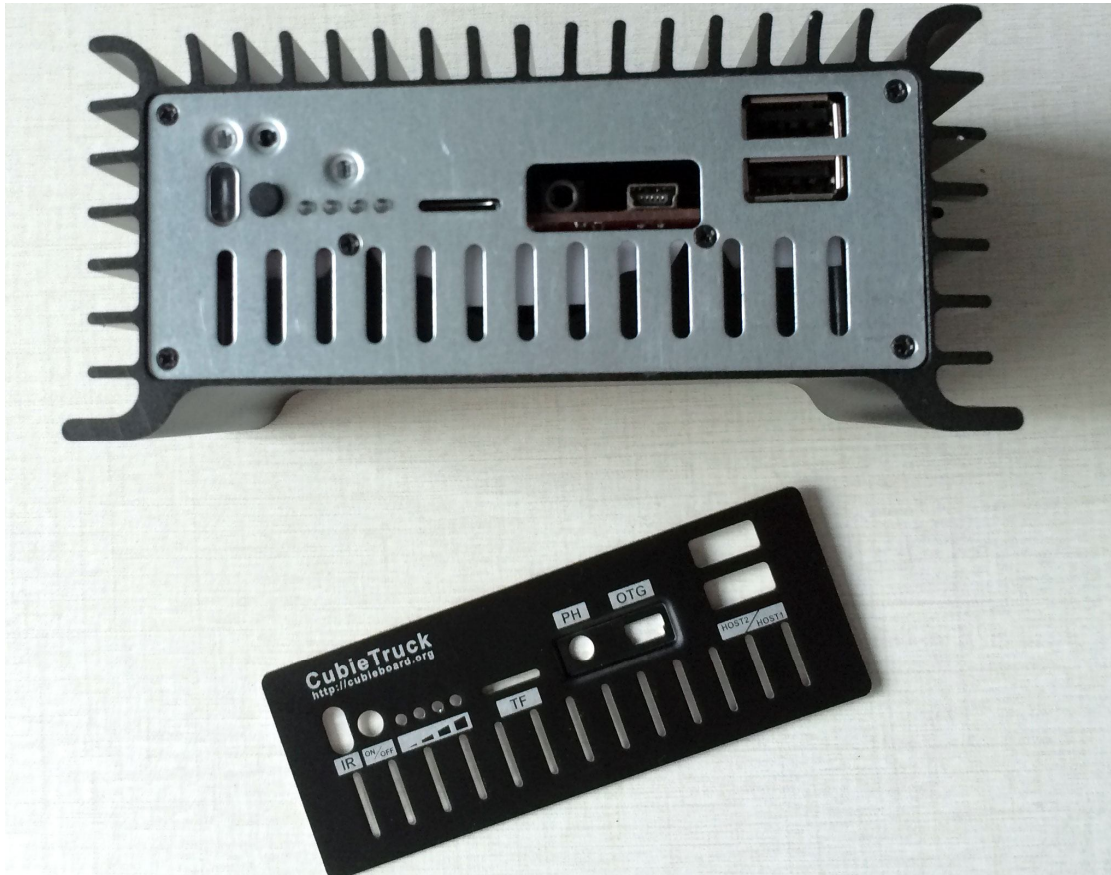
Picture 7-2-3



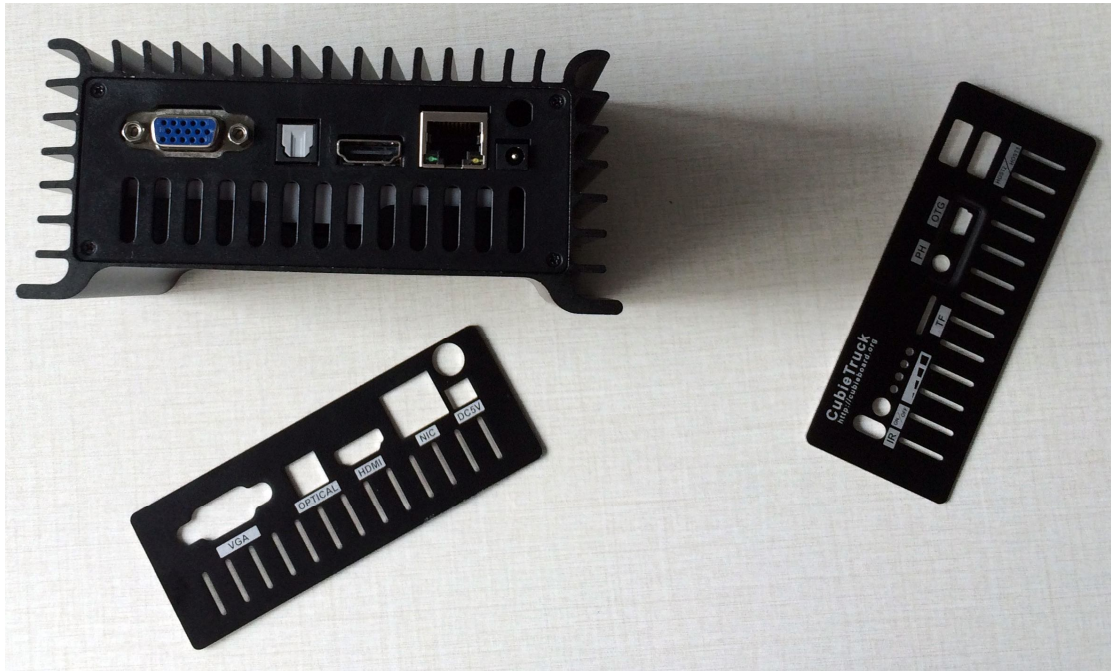
Picture 7-3

Step 7: stick outer metal baffle

Just stick the baffle on both side then we will finish the installation. When stick over the outer baffle on the inner baffle, you need to aim at the port position. You need to tear the sticker by yourself.



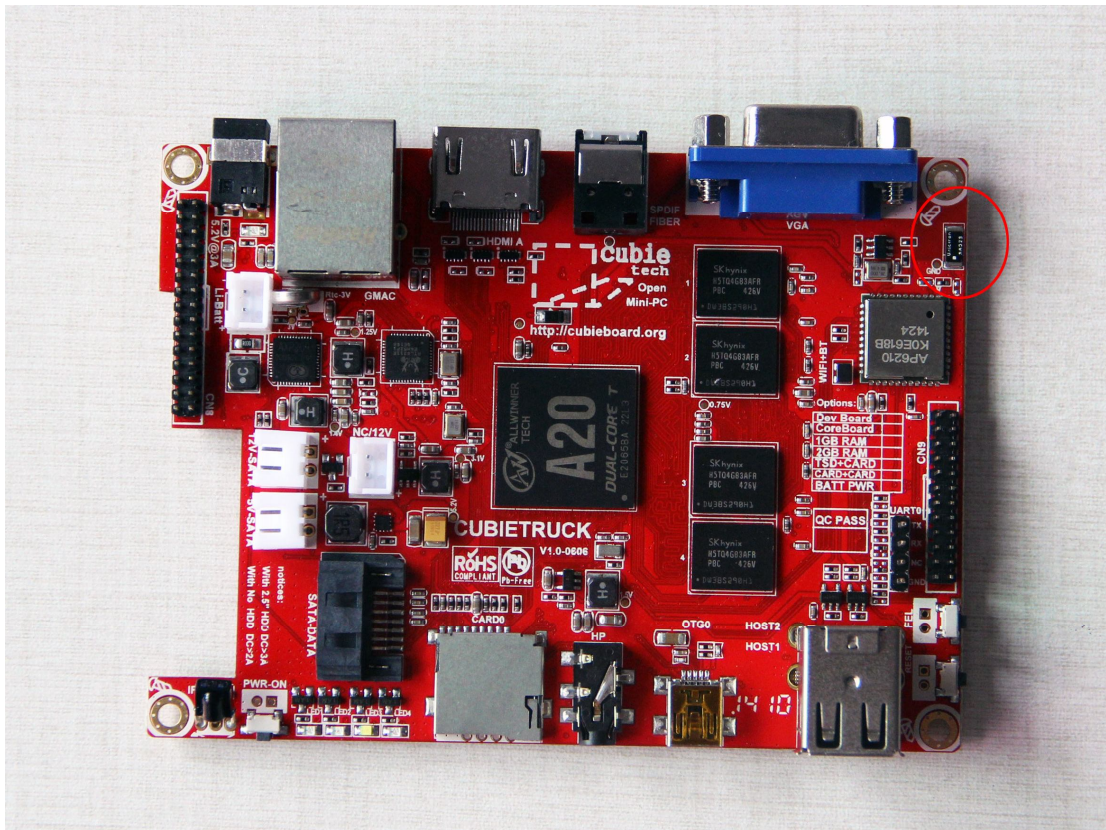
Picture 8-1



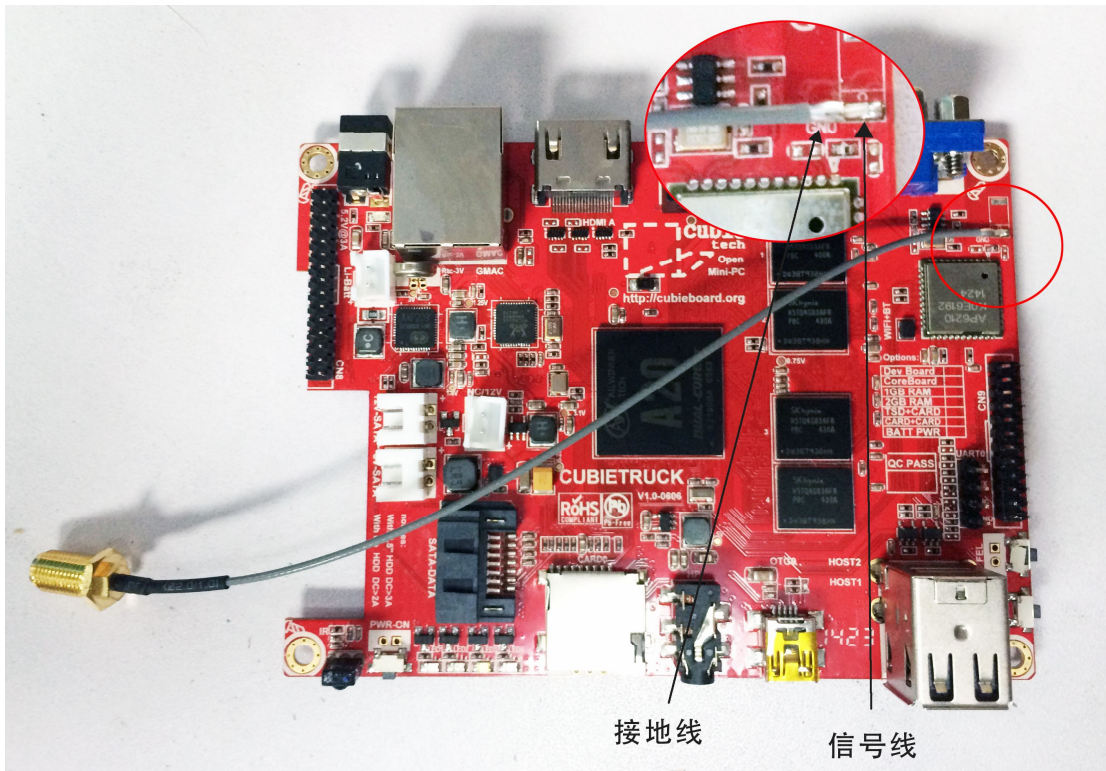
Picture 8-2

[Supplement] The antenna for CT soldering position and installation tips

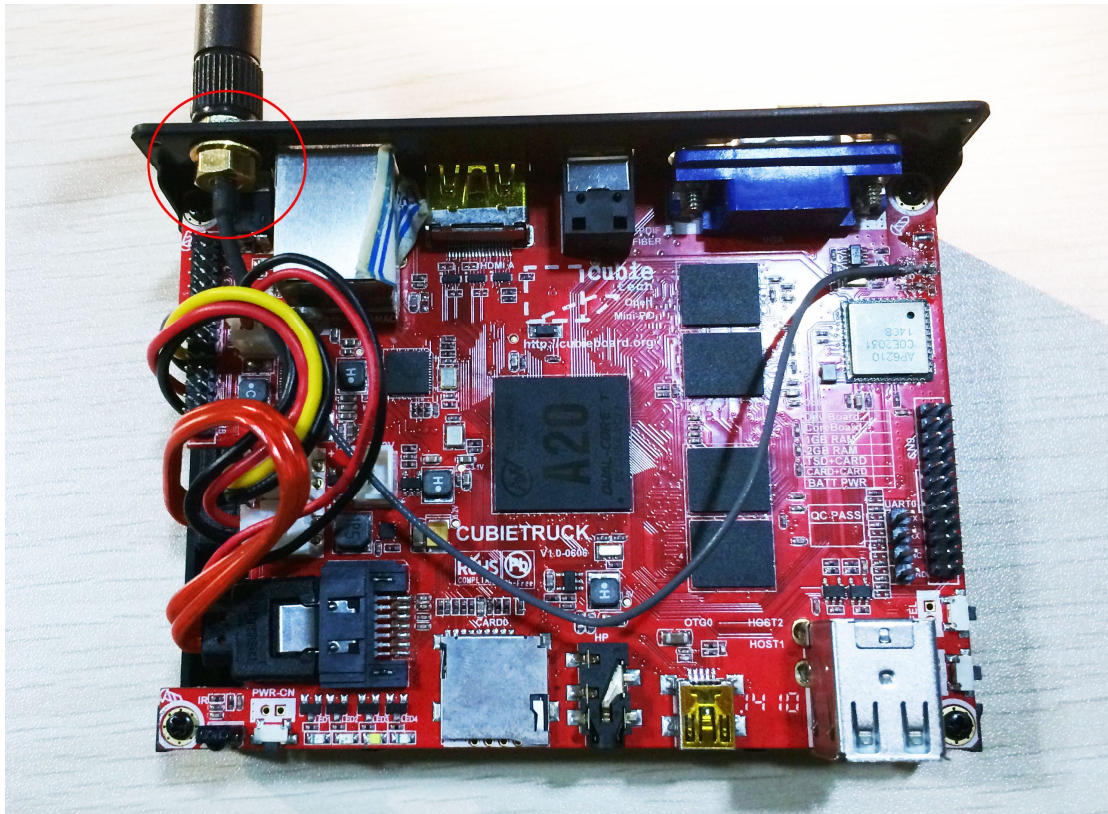
The signal reception may be hindered by the metal case, so we use an external antenna for CT to solve it. The external antenna would come with the Cubietruck Metal Case package. Look at Picture 9-1, the mark position is for antenna, We can use the external ANT to take the place of the ceramic chip antenna, after remove the ceramic chip antenna, You can refer to Picture 9-2 to do the soldering. After soldering, the accessories need be to install which we can see in Picture 9-3 and Picture 9-4.



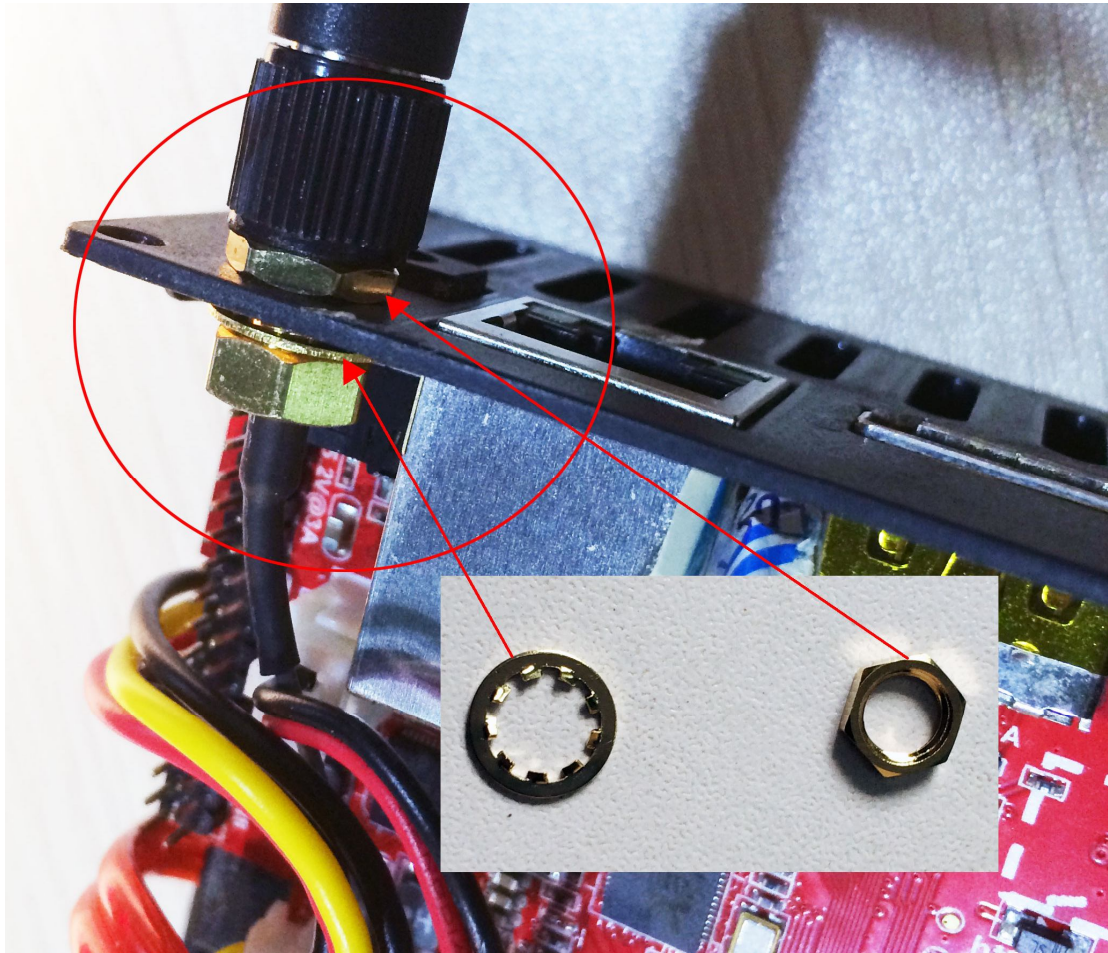
Picture 9-1



Picture 9-2



Picture 9-3



Picture 9-4

That's all for installation, the picture below is the finished one. Hope everybody will enjoy the DIY tour.

