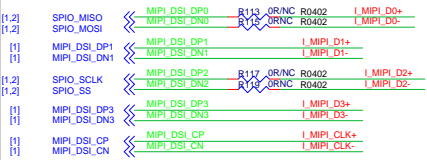
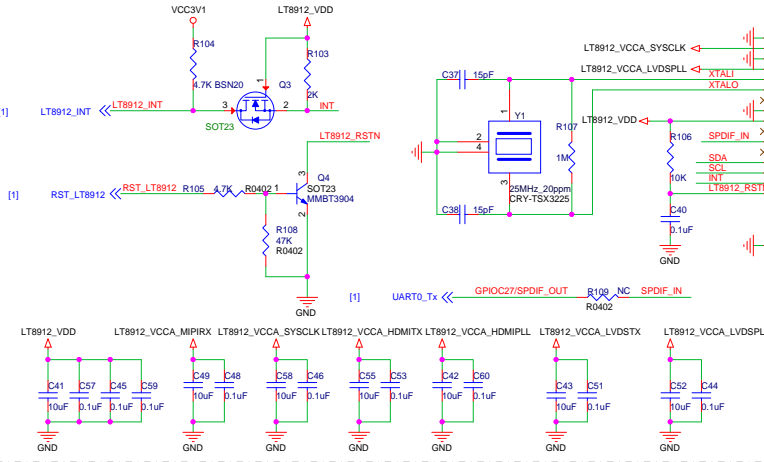




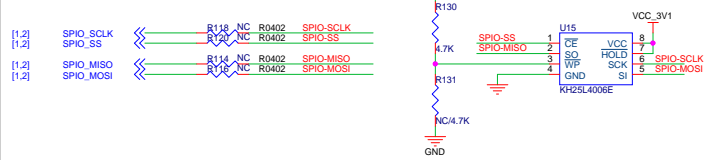
# MIPI-D to HDMI



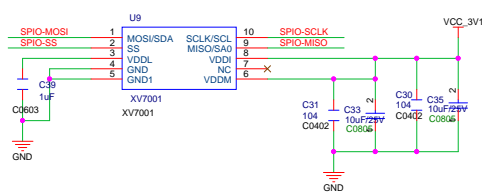
## MIPI\_IN



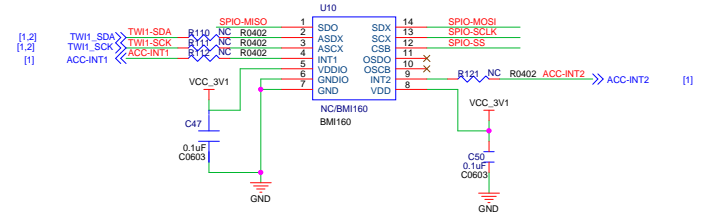
## SPI Flash



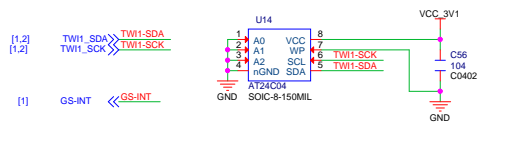
## SPI Gyroscope



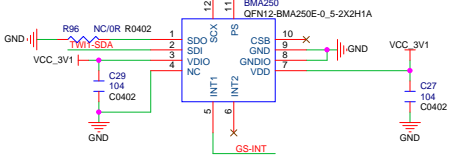
## SPI Gyroscope & Accelerometer



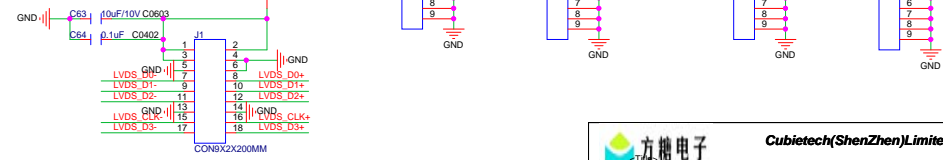
## EEPROM



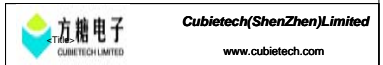
## G-Sensor



## LT8912B\_LVDS



7Bits I2C Address: 0x18



File	cDoc	Rev	<RevCode>
Date	Thursday, October 18, 2017	2	
Size	Document Number	2	Rev
Sheet	of		